

Cat. No.	Description
20° Elevated	
6320-36-22	20° Elevated Rim Liner, 36mm OD x 22mm ID
Through ↓	Through ↓
6320-80-22	20° Elevated Rim Liner, 80mm OD x 22mm ID
6320-42-26	20° Elevated Rim Liner, 42mm OD x 26mm ID
Through ↓	Through ↓
6320-80-26	20° Elevated Rim Liner, 80mm OD x 26mm ID
6320-44-28	20° Elevated Rim Liner, 44mm OD x 28mm ID
Through ↓	Through ↓
6320-80-28	20° Elevated Rim Liner, 80mm OD x 28mm ID
6320-48-32	20° Elevated Rim Liner, 48mm OD x 32mm ID
Through ↓	Through ↓
6320-80-32	20° Elevated Rim Liner, 80mm OD x 32mm ID
7mm Offset	
6341-40-22	7mm Offset, 40mm OD x 22mm ID
Through ↓	Through ↓
6341-70-22	7mm Offset, 70mm OD x 22mm ID
6341-42-26	7mm Offset, 42mm OD x 26mm ID
Through ↓	Through ↓
6341-70-26	7mm Offset, 70mm OD x 26mm ID
6341-44-28	7mm Offset, 44mm OD x 28mm ID
Through ↓	Through ↓
6341-70-28	7mm Offset, 70mm OD x 28mm ID
6341-48-32	7mm Offset, 48mm OD x 32mm ID
Through ↓	Through ↓
6341-70-32	7mm Offset, 70mm OD x 32mm ID

MODULAR ACETABULAR INSTRUMENT SET

Cat. No.	Description
6270-99-01	Instrument Set (Includes one each of items below)
6275-10	Case (Includes Base and Lid)
6260-30-01	Disassembly Device
6260-35-01	Liner Extractor
6260-40	Liner Elevator
6260-18	Cup Positioner
6260-47	Gunsight Alignment Guide
5785-79	Tibial Alignment Rod
6260-02	Flex Shaft w/Modular Connector
6260-03-01	Drill Bit, 15mm
6260-03-02	Drill Bit, 30mm
6260-03-03	Drill Bit, 45mm
6260-06	Drill Guide
6260-07-01	Tap, 4.5mm
6260-07-02	Tap, 6.5mm
6260-08-01	Tap Guide, 4.5mm
6260-08-02	Tap Guide, 6.5mm
6260-10	Tap Handle
6260-13	Screw Holding Forceps, 15°
6260-14	Screw Holding Forceps, 45°
6260-24	Straight Screwdriver
6260-25	Universal Screwdriver
6260-26	Modular Universal Handle
6611-98	Depth Gauge
4215-200	Torque Limiter

OPTIONAL/ADDITIONAL INSTRUMENTS

Cat. No.	Description
6260-46	A-Frame Alignment Guide
6611-03-01	Drill Bit, Short-Flexible (HGP II)
6611-03-02	Drill Bit, Medium-Flexible (HGP II)
6611-03-03	Drill Bit, Long-Flexible (HGP II)
6260-15-11	Replaceable Poly Cap (6 ea.)
6260-15-12	Replaceable Metal Cap (1 ea.)
6260-16-22	Liner Inserter (Vacuum)
6260-16-26	Liner Inserter (Vacuum)
6260-16-28	Liner Inserter (Vacuum)
6260-16-32	Liner Inserter (Vacuum)
6260-17-22	Liner Inserter (Mechanical)
6260-17-26	Liner Inserter (Mechanical)
6260-17-28	Liner Inserter (Mechanical)
6260-17-32	Liner Inserter (Mechanical)
6260-17-36	Liner Inserter (Mechanical)
6260-17-40	Liner Inserter (Mechanical)
6611-10	HGP II Cup Pusher
6275-19	Rim Impactor Tray
6275-25	Jumbo Provisional Half Case

ACETABULAR REAMERS

Cat. No.	Description
1206-90-01	Acetabular Reamer System Standard Kit (36 - 70mm)
1206-90-02	Acetabular Reamer System Jumbo Kit (71 - 80mm)

RIM IMPACTORS

Available in 4mm increments.

Cat. No.	Description
6270-99-09	Rim Impactor Set (Includes one each of items below)
6270-20	Case (Includes Base and Lid)
6270-38	Rim Impactor, 38/40mm
Through ↓	Through ↓
6270-78	Rim Impactor, 78/80mm

SHELL PROVISIONALS

Cat. No.	Description
6270-99-02	Shell Provisional Set (Includes one each of items below)
6275-15	Case (Includes Base and Lid)
6242-40	Shell Provisional, 40mm
Through ↓	Through ↓
6242-70	Shell Provisional, 70mm
6270-199-02	Jumbo Shell Provisional Set (Includes one each of items below)
6275-18	Tray
6242-72	Shell Provisional, 72mm
Through ↓	Through ↓
6242-80	Shell Provisional, 80mm

LINER PROVISIONALS

Liner Provisionals are available in 2mm increments. Shell sizes 50, 52, and 54 use the same size provisional liner.

Locking Screws are ordered separately.

POLAR SCREWS (OPTIONAL)

Cat. No.	Description
6270-99-10	Polar Screw Set (Includes seven each of item below)
6270-01	Polar Screw

LINER PROVISIONALS 22mm

Cat. No.	Description
6270-99-22	Provisional Liner Set - 22mm (Includes one each of items below)
6270-40-22	Standard Provisional Liner, 22mm
Through ↓	Through ↓
6270-70-22	Standard Provisional Liner, 22mm
6271-99-22	10° Elev. Provisional Liner Set - 22mm (Includes one each of items below)
6271-40-22	10° Elev. Provisional Liner, 22mm
Through ↓	Through ↓
6271-70-22	10° Elev. Provisional Liner, 22mm
6272-99-22	20° Elev. Provisional Liner Set - 22mm (Includes one each of items below)
6272-40-22	20° Elev. Provisional Liner, 22mm
Through ↓	Through ↓
6272-70-22	20° Elev. Provisional Liner, 22mm
6270-199-22	Std Jumbo Provisional Liner Set - 22mm (Includes one each of items below)
6270-72-22	Std Jumbo Provisional Liner, 22mm
Through ↓	Through ↓
6270-80-22	Std Jumbo Provisional Liner, 22mm
6271-199-22	10° Elev. Jumbo Provisional Liner Set - 22mm (Includes one each of items below)
6271-72-22	10° Elev. Jumbo Provisional Liner, 22mm
Through ↓	Through ↓
6271-80-22	10° Jumbo Provisional Liner, 22mm
6272-199-22	20° Elev. Jumbo Provisional Liner Set - 22mm (Includes one each of items below)
6272-72-22	20° Elev. Provisional Liner, 22mm
Through ↓	Through ↓
6272-80-22	20° Elev. Provisional Liner, 22mm

LINER PROVISIONALS 26mm

Cat. No.	Description
6270-99-26	Provisional Liner Set - 26mm (Includes one each of items below)
6270-40-26	Standard Provisional Liner, 26mm
Through ↓	Through ↓
6270-70-26	Standard Provisional Liner, 26mm
6271-99-26	10° Elev. Provisional Liner Set - 26mm (Includes one each of items below)
6271-40-26	10° Elev. Provisional Liner, 26mm
Through ↓	Through ↓
6271-70-26	10° Elev. Provisional Liner, 26mm
6272-99-26	20° Elev. Provisional Liner Set - 26mm (Includes one each of items below)
6272-40-26	20° Elev. Provisional Liner, 26mm
Through ↓	Through ↓
6272-70-26	20° Elev. Provisional Liner, 26mm
6270-199-26	Std Jumbo Provisional Liner Set - 26mm (Includes one each of items below)
6270-72-26	Std Jumbo Provisional Liner, 26mm
Through ↓	Through ↓
6270-80-26	Std Jumbo Provisional Liner, 26mm
6271-199-26	10° Elev. Jumbo Provisional Liner Set - 26mm (Includes one each of items below)
6271-72-26	10° Elev. Jumbo Provisional Liner, 26mm
Through ↓	Through ↓
6271-80-26	10° Elev. Jumbo Provisional Liner, 26mm
6272-199-26	20° Elev. Jumbo Provisional Liner Set - 26mm (Includes one each of items below)
6272-72-26	20° Elev. Provisional Liner, 26mm
Through ↓	Through ↓
6272-80-26	20° Elev. Jumbo Provisional Liner, 26mm

LINER PROVISIONALS 28mm

Cat. No.	Description
6270-99-28	Provisional Liner Set - 28mm (Includes one each of items below)
6270-40-28	Standard Provisional Liner, 28mm
Through ↓	Through ↓
6270-70-28	Standard Provisional Liner, 28mm
6271-99-28	10° Elev. Provisional Liner Set - 28mm (Includes one each of items below)
6271-40-28	10° Elev. Provisional Liner, 28mm
Through ↓	Through ↓
6271-70-28	10° Elev. Provisional Liner, 28mm
6272-99-28	20° Elev. Provisional Liner Set - 28mm (Includes one each of items below)
6272-40-28	20° Elev. Provisional Liner, 28mm
Through ↓	Through ↓
6272-70-28	20° Elev. Provisional Liner, 28mm
6270-199-28	Std Jumbo Provisional Liner Set - 28mm (Includes one each of items below)
6270-72-28	Std Jumbo Provisional Liner, 28mm
Through ↓	Through ↓
6270-80-28	Std Jumbo Provisional Liner, 28mm
6271-199-28	10° Elev. Jumbo Provisional Liner Set - 28mm (Includes one each of items below)
6271-72-28	10° Elev. Jumbo Provisional Liner, 28mm
Through ↓	Through ↓
6271-80-28	10° Elev. Jumbo Provisional Liner, 28mm
6272-199-28	20° Elev. Jumbo Provisional Liner Set - 28mm (Includes one each of items below)
6272-72-28	20° Elev. Jumbo Provisional Liner, 28mm
Through ↓	Through ↓
6272-80-28	20° Elev. Jumbo Provisional Liner, 28mm

LINER PROVISIONALS 32mm

Cat. No.	Description
6270-99-32	Provisional Liner Set - 32mm (Includes one each of items below)
6270-40-32	Standard Provisional Liner, 32mm
Through ↓	Through ↓
6270-70-32	Standard Provisional Liner, 32mm
6271-99-32	10° Elev. Provisional Liner Set - 32mm (Includes one each of items below)
6271-40-32	10° Elev. Provisional Liner, 32mm
Through ↓	Through ↓
6271-70-32	10° Elev. Provisional Liner, 32mm
6272-99-32	20° Provisional Liner Set - 32mm (Includes one each of items below)
6272-40-32	20° Elev. Provisional Liner, 32mm
Through ↓	Through ↓
6272-70-32	20° Elev. Provisional Liner, 32mm
6270-199-32	Std Jumbo Provisional Liner Set - 32mm (Includes one each of items below)
6270-72-32	Std Jumbo Provisional Liner, 32mm
Through ↓	Through ↓
6270-80-32	Std Jumbo Provisional Liner, 32mm
6271-199-32	10° Elev. Jumbo Provisional Liner Set - 32mm (Includes one each of items below)
6271-72-32	10° Elev. Jumbo Provisional Liner, 32mm
Through ↓	Through ↓
6271-80-32	10° Elev. Jumbo Provisional Liner, 32mm
6272-199-32	20° Elev. Jumbo Provisional Liner Set - 32mm (Includes one each of items below)
6272-72-32	20° Elev. Jumbo Provisional Liner, 32mm
Through ↓	Through ↓
6272-80-32	20° Elev. Jumbo Provisional Liner, 32mm

LINER PROVISIONALS/INSTRUMENTS 36mm

Cat. No.	Description
6270-99-36	Provisional Liner Set - 36mm (Includes one each of items below)
6261-90	Case (Includes Base and Lid)
6270-50-36	Standard Provisional Liner, 36mm
Through ↓	Through ↓
6270-80-36	Standard Provisional Liner, 36mm
7695-36-01	6° Femoral Head Provisional
Through ↓	Through ↓
7695-36-05	6° Femoral Head Provisional
7895-36-01	12/14 Femoral Head Provisional
Through ↓	Through ↓
7895-36-05	12/14 Femoral Head Provisional
6260-17-36	Liner Inserter
6271-99-36	10° Elev. Provisional Liner Set - 36mm (Includes one each of items below)
6261-90	Case (Includes Base and Lid)
6271-50-36	10° Elev. Provisional Liner, 36mm
Through ↓	Through ↓
6271-80-36	10° Elev. Provisional Liner, 36mm
7695-36-01	6° Femoral Head Provisional
Through ↓	Through ↓
7695-36-05	6° Femoral Head Provisional
7895-36-01	12/14 Femoral Head Provisional
Through ↓	Through ↓
7895-36-05	12/14 Femoral Head Provisional
6260-17-36	Liner Inserter

LINER PROVISIONALS/INSTRUMENTS 40mm

Cat. No.	Description
6271-99-40	10° Elev. Provisional Liner Set - 40mm (Includes one each of items below)
6261-95	Case (Includes Base and Lid)
6271-58-40	10° Elev. Provisional Liner, 40mm
Through ↓	Through ↓
6271-80-40	10° Elev. Provisional Liner, 40mm
7895-40-01	12/14 Femoral Head Provisional
Through ↓	Through ↓
7895-40-05	12/14 Femoral Head Provisional
6260-17-40	Liner Inserter

LINER PROVISIONALS 7mm OFFSET

Cat. No.	Description
6275-99-22	7mm Offset Provisional Liner Set - 22mm (Includes one each of items below)
6275-40-22	7mm Offset Provisional Liner, 22mm
Through ↓	Through ↓
6275-70-22	7mm Offset Provisional Liner, 22mm
6275-99-26	7mm Offset Provisional Liner Set - 26mm (Includes one each of items below)
6275-42-26	7mm Offset Provisional Liner, 26mm
Through ↓	Through ↓
6275-70-26	7mm Offset Provisional Liner, 26mm
6275-99-28	7mm Offset Provisional Liner Set - 28mm (Includes one each of items below)
6275-44-28	7mm Offset Provisional Liner, 28mm
Through ↓	Through ↓
6275-70-28	7mm Offset Provisional Liner, 28mm
6275-99-32	7mm Offset Provisional Liner Set - 32mm (Includes one each of items below)
6275-48-32mm	7mm Offset Provisional Liner, 32mm
Through ↓	Through ↓
6275-70-32	7mm Offset Provisional Liner, 32mm

LINER PROVISIONALS - CONSTRAINED

Cat. No.	Description
6174-99-32	Constrained Provisional Liner Set - 32mm (Includes one each of items below)
6174-50-32	Constrained Provisional Liner, 32mm
Through ↓	Through ↓
6174-80-32	Constrained Provisional Liner, 32mm

LINER PROVISIONALS - ECCENTRIC

Cat. No.	Description
6171-99-28	Eccentric Provisional Liner Set - 28mm (Includes one each of items below)
6171-64-28	Eccentric Provisional Liner, 28mm
Through ↓	Through ↓
6161-80-28	Eccentric Provisional Liner, 28mm
6171-99-32	Eccentric Provisional Liner Set - 32mm (Includes one each of items below)
6171-64-32	Eccentric Provisional Liner, 32mm
Through ↓	Through ↓
6171-80-32	Eccentric Provisional Liner, 32mm
6260-19	Eccentric Liner Inserter Handle
6260-19-28	Eccentric Liner Inserter Head, 28mm
6260-19-32	Eccentric Liner Inserter Head, 32mm

LINER PROVISIONALS - OBLIQUE

Cat. No.	Description
6172-99-22	Oblique Provisional Liner Set - 22mm (Includes one each of items below)
6172-38-22	Oblique Provisional Liner, 22mm
Through ↓	Through ↓
6162-48-22	Oblique Provisional Liner, 22mm
6172-99-28	Oblique Provisional Liner Set - 28mm (Includes one each of items below)
6172-50-28	Oblique Provisional Liner, 28mm
Through ↓	Through ↓
6172-62-28	Oblique Provisional Liner, 28mm
6172-99-32	Oblique Provisional Liner Set - 32mm (Includes one each of items below)
6172-56-32	Oblique Provisional Liner, 32mm
Through ↓	Through ↓
6172-62-32	Oblique Provisional Liner, 32mm



Please refer to package insert for complete product information, including contraindications, warnings, precautions, and adverse effects.

Contact your Zimmer Representative or visit us at www.zimmer.com.

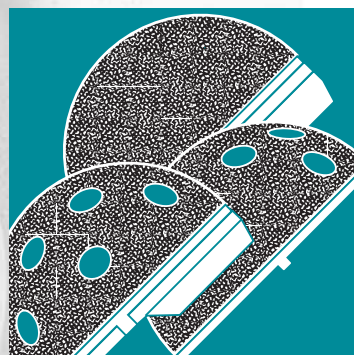


zimmer
Confidence in your hands™

This surgical technique written in cooperation with Wayne Paprosky, M.D.

TRABECULAR METAL MODULAR CUP

Surgical
Technique



zimmer
Confidence in your hands™

TRABECULAR METAL ACETABULAR SHELLS

SHELLS are available in 2mm OD increments
6202-SHELL OD-SHELL TYPE

Cat. No.	Description
Non-Holed	
6202-38-21	Trabecular Metal Acetabular Shell, 38mm, Solid
Through ↓	Through ↓
6202-70-21	Trabecular Metal Acetabular Shell, 70mm, Solid
Cluster-Holed	
6202-38-22	Trabecular Metal Acetabular Shell, 38mm, Cluster
Through ↓	Through ↓
6202-80-22	Trabecular Metal Acetabular Shell, 80mm, Cluster
Multi-Holed	
6202-38-20	Trabecular Metal Acetabular Shell, 38mm, Multi
Through ↓	Through ↓
6202-80-20	Trabecular Metal Acetabular Shell, 80mm, Multi

BONE SCREWS

SCREWS are available in 5mm LENGTH increments up to 40mm
6250-SIZE-LENGTH

Cat. No.	Description
6250-45-15	Bone Screw, 4.5x15mm, Self-Tapping
Through ↓	Through ↓
6250-45-40	Bone Screw, 4.5x40mm, Self-Tapping
6250-45-50	Bone Screw, 4.5x50mm, Self-Tapping
6250-45-60	Bone Screw, 4.5x60mm, Self-Tapping
6250-65-15	Bone Screw, 6.5x15mm, Self-Tapping
Through ↓	Through ↓
6250-65-40	Bone Screw, 6.5x40mm, Self-Tapping
6250-65-50	Bone Screw, 6.5x50mm, Self-Tapping
6250-65-60	Bone Screw, 6.5x60mm, Self-Tapping
6250-65-70	Bone Screw, 6.5x70mm, Self-Tapping
6250-65-80	Bone Screw, 6.5x80mm, Self-Tapping

Warning: This device is not approved for screw attachment or fixation to the posterior elements (pedicles) of the cervical, thoracic, or lumbar spine.

POLYETHYLENE LINER THICKNESS

Shell OD (mm)	Polyethylene Liner					
	22mm	26mm	28mm	32mm	36mm	40mm
38	5.1	—	—	—	—	—
40	6.1	—	—	—	—	—
42	6.1	5.3	—	—	—	—
44	7.1	6.2	5.2	—	—	—
46	8.2	6.3	6.3	—	—	—
48	9.1	7.3	6.2	5.3	—	—
50	10.1	8.2	7.2	6.3	6.8	—
52	10.1	8.2	7.2	6.3	6.8	—
54	10.1	8.2	7.2	6.3	6.8	—
56	11.2	9.3	8.3	6.4	7.9	—
58	12.2	10.3	9.3	7.3	8.9	6.8
60	13.2	11.3	10.3	8.4	9.9	7.9
62	14.2	12.3	11.3	9.3	10.9	8.9
64	15.2	13.3	12.3	10.3	11.9	9.9
66	16.2	14.3	13.3	11.4	12.9	10.9
68	17.2	15.4	14.3	12.4	13.9	11.9
70	18.2	16.3	15.3	13.3	14.9	12.9
72	19.2	17.3	16.3	14.4	15.9	13.9
74	20.2	18.4	17.3	15.4	16.9	14.9
76	21.2	19.3	18.3	16.3	17.9	15.9
78	22.2	20.3	19.3	17.3	18.9	16.9
80	23.2	21.3	20.3	18.3	19.9	17.9

POLYETHYLENE LINERS

Liners are available in 2mm increments
Shell sizes 50, 52, and 54 use the same size liner

Cat. No.	Description
Standard	
6105-36-22	Poly Liner, 36mm OD x 22mm ID
Through ↓	Through ↓
6105-80-22	Poly Liner, 80mm OD x 22mm ID
6105-42-26	Poly Liner, 42mm OD x 26mm ID
Through ↓	Through ↓
6105-80-26	Poly Liner, 80mm OD x 26mm ID
6105-44-28	Poly Liner, 44mm OD x 28mm ID
Through ↓	Through ↓
6105-80-28	Poly Liner, 80mm OD x 28mm ID
6105-48-32	Poly Liner, 48mm OD x 32mm ID
Through ↓	Through ↓
6105-80-32	Poly Liner, 80mm OD x 32mm ID
10° Elevated	
6110-36-22	10° Elevated Rim Liner, 36mm OD x 22mm ID
Through ↓	Through ↓
6110-80-22	10° Elevated Rim Liner, 80mm OD x 22mm ID
6110-42-26	10° Elevated Rim Liner, 42mm OD x 26mm ID
Through ↓	Through ↓
6110-80-26	10° Elevated Rim Liner, 80mm OD x 26mm ID
6110-44-28	10° Elevated Rim Liner, 44mm OD x 28mm ID
Through ↓	Through ↓
6110-80-28	10° Elevated Rim Liner, 80mm OD x 28mm ID
6110-48-32	10° Elevated Rim Liner, 48mm OD x 32mm ID
Through ↓	Through ↓
6110-80-32	10° Elevated Rim Liner, 80mm OD x 32mm ID
20° Elevated	
6120-36-22	20° Elevated Rim Liner, 36mm OD x 22mm ID
Through ↓	Through ↓
6120-80-22	20° Elevated Rim Liner, 80mm OD x 22mm ID
6120-42-26	20° Elevated Rim Liner, 42mm OD x 26mm ID
Through ↓	Through ↓
6120-80-26	20° Elevated Rim Liner, 80mm OD x 26mm ID
6120-44-28	20° Elevated Rim Liner, 44mm OD x 28mm ID
Through ↓	Through ↓
6120-80-28	20° Elevated Rim Liner, 80mm OD x 28mm ID
6120-48-32	20° Elevated Rim Liner, 48mm OD x 32mm ID
Through ↓	Through ↓
6120-80-32	20° Elevated Rim Liner, 80mm OD x 32mm ID
7mm Offset	
6141-40-22	7mm Offset, 40mm OD x 22mm ID
Through ↓	Through ↓
6141-70-22	7mm Offset, 70mm OD x 22mm ID
6141-42-26	7mm Offset, 42mm OD x 26mm ID
Through ↓	Through ↓
6141-70-26	7mm Offset, 70mm OD x 26mm ID
6141-44-28	7mm Offset, 44mm OD x 28mm ID
Through ↓	Through ↓
6141-70-28	7mm Offset, 70mm OD x 28mm ID
6141-48-32	7mm Offset, 48mm OD x 32mm ID
Through ↓	Through ↓
6141-70-32	7mm Offset, 70mm OD x 32mm ID
Constrained	
6154-00-32	Constrained Liner Set (Includes all liners listed below)
6154-50-32	50mm OD x 32mm ID
Through ↓	Through ↓
6154-80-32	80mm OD x 32mm ID

Cat. No.	Description
Eccentric	
6151-00-28	Eccentric Liner Set (Includes all 28mm ID liners listed below)
6151-64-28	Eccentric Liner, 64mm OD x 28mm ID
Through ↓	Through ↓
6151-80-28	Eccentric Liner, 80mm OD x 28mm ID
6151-00-32	Eccentric Liner Set (Includes all 32mm ID liners listed below)
6151-64-32	Eccentric Liner, 64mm OD x 32mm ID
Through ↓	Through ↓
6151-80-32	Eccentric Liner, 80mm OD x 32mm ID
Oblique	
6152-00-01	Oblique Liner Set (Includes all 22mm liners listed below)
6152-38-22	Oblique Liner, 38mm OD x 22mm ID
Through ↓	Through ↓
6152-48-22	Oblique Liner, 48mm OD x 22mm ID
6152-00-02	Oblique Liner Set (Includes all 28mm liners listed below)
6152-50-28	Oblique Liner, 50mm OD x 28mm ID
Through ↓	Through ↓
6152-62-28	Oblique Liner, 62mm OD x 28mm ID
6152-00-03	Oblique Liner Set (Includes all 32mm liners listed below)
6152-56-32	Oblique Liner, 56mm OD x 32mm ID
Through ↓	Through ↓
6152-62-32	Oblique Liner, 62mm OD x 32mm ID

LONGEVITY CROSSLINKED POLYETHYLENE LINERS

Liners are available in 2mm increments.
Shell sizes 50, 52 and 54 use the same size liner.

Cat. No.	Description
Standard	
6305-36-22	Poly Liner, 36mm OD x 22mm ID
Through ↓	Through ↓
6305-80-22	Poly Liner, 80mm OD x 22mm ID
6305-42-26	Poly Liner, 42mm OD x 26mm ID
Through ↓	Through ↓
6305-80-26	Poly Liner, 80mm OD x 26mm ID
6305-44-28	Poly Liner, 44mm OD x 28mm ID
Through ↓	Through ↓
6305-80-28	Poly Liner, 80mm OD x 28mm ID
6305-48-32	Poly Liner, 48mm OD x 32mm ID
Through ↓	Through ↓
6305-80-32	Poly Liner, 80mm OD x 32mm ID
6305-50-36	Poly Liner, 50mm OD x 36mm ID
Through ↓	Through ↓
6305-80-36	Poly Liner, 80mm OD x 36mm ID
10° Elevated	
6310-36-22	10° Elevated Rim Liner, 36mm OD x 22mm ID
Through ↓	Through ↓
6310-80-22	10° Elevated Rim Liner, 80mm OD x 22mm ID
6310-42-26	10° Elevated Rim Liner, 42mm OD x 26mm ID
Through ↓	Through ↓
6310-80-26	10° Elevated Rim Liner, 80mm OD x 26mm ID
6310-44-28	10° Elevated Rim Liner, 44mm OD x 28mm ID
Through ↓	Through ↓
6310-80-28	10° Elevated Rim Liner, 80mm OD x 28mm ID
6310-48-32	10° Elevated Rim Liner, 48mm OD x 32mm ID
Through ↓	Through ↓
6310-80-32	10° Elevated Rim Liner, 80mm OD x 32mm ID
6310-50-36	10° Elevated Rim Liner, 50mm OD x 36mm ID
Through ↓	Through ↓
6310-80-36	10° Elevated Rim Liner, 80mm OD x 36mm ID
6310-58-40	10° Elevated Rim Liner, 58mm OD x 40mm ID
Through ↓	Through ↓
6310-80-40	10° Elevated Rim Liner, 80mm OD x 40mm ID

1 ACETABULAR REAMING

Use reamer to prepare acetabular implant site. Hold reamer steady and apply pressure in the same direction that the prosthesis will be implanted.

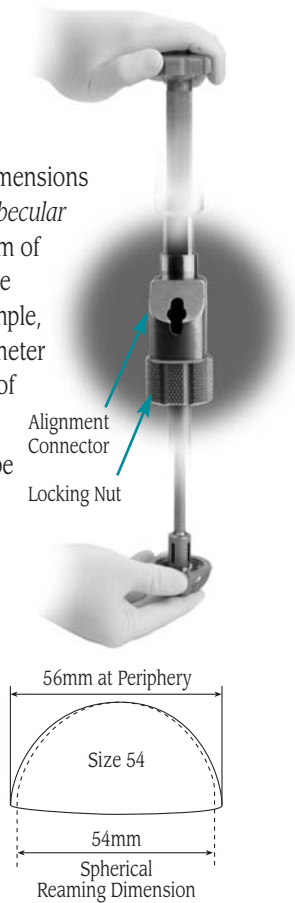


2 COMPONENT SIZING

Provisional shell sizes match the outside dimensions of the acetabular reamers. The elliptical *Trabecular Metal* Modular Acetabular Cup provides 2mm of interference fit at its periphery if the cup size matches the last reamer size used. For example, the 54mm acetabular cup has an outer diameter of 56mm at its rim, but matches the height of the reaming at the polar dome of the cup.

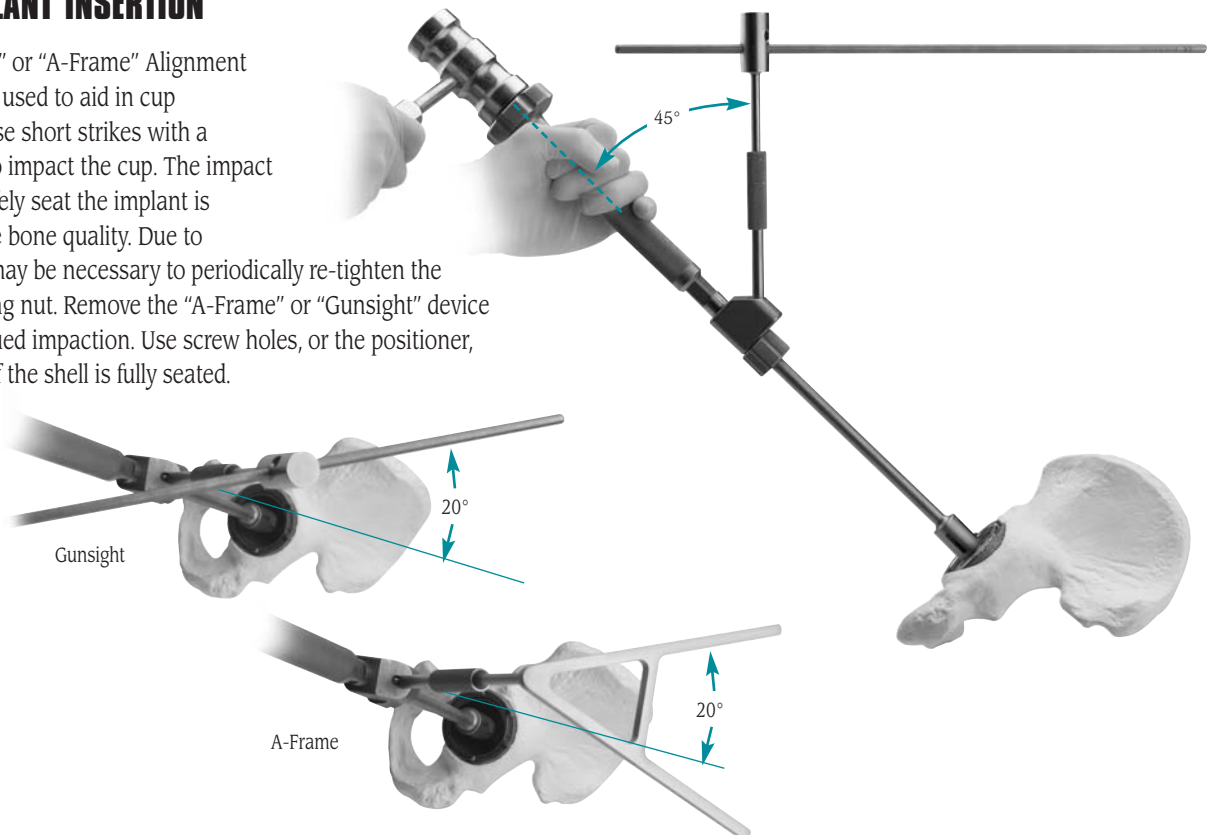
Note: The amount of press fit used should be determined at time of surgery and be based upon bone quality.

Select the provisional shell that is the same size as the last even-numbered reamer used. Thread the provisional shell onto the positioner securely. Impact the alignment connector to engage onto the taper. Tighten Locking Nut.



8 IMPLANT INSERTION

The "Gunsight" or "A-Frame" Alignment Guides can be used to aid in cup positioning. Use short strikes with a small mallet to impact the cup. The impact required to safely seat the implant is dictated by the bone quality. Due to impaction, it may be necessary to periodically re-tighten the collet or locking nut. Remove the "A-Frame" or "Gunsight" device during continued impaction. Use screw holes, or the positioner, to determine if the shell is fully seated.



3 PROVISIONAL SHELL POSITIONING AND ALIGNMENT

Ensure the patient is in the correct position. With the Provisional Shell connected to the positioner, insert the Provisional Shell into the prepared site. Keep the slaphammer portion of the positioner vertical, and “A-Frame” or “Gunsight” extension parallel with the patient’s body, to achieve 45 degrees abduction and 20 degrees forward flexion.

Note: The Provisional Shell has protruding, 1mm teeth around the rim for stability during trial reduction. It also has fenestrations so that cup seating can be assessed.

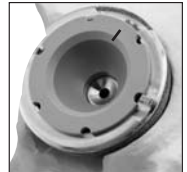


4 PROVISIONAL LINER AND TRIAL RANGE OF MOTION

Select the Provisional Liner size that matches the previously selected Provisional Shell. Perform trial reduction. After determining the appropriate style, face angle, and position, mark the bone opposite the positioning mark on the liner. This mark serves as a reference later when positioning the Acetabular Cup.

Optional: The Provisional Liner Polar Screw can be used to lock the Provisional Liner and Provisional Shell together during trial reduction.

Warning: Do not impact onto the Provisional Liner as damage may occur.



Provisional Liner and Shell

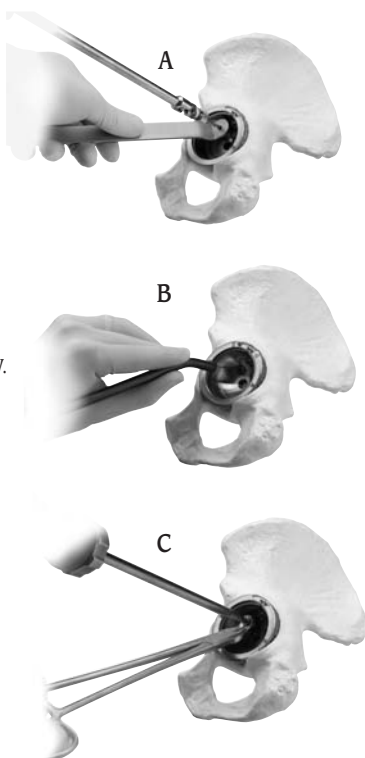


9 SCREW INSERTION

If screw placement is desired, drill a pilot hole by placing the drill through the Drill Guide in the desired screw hole (A). Measure the hole’s depth with the Depth Gauge (B).

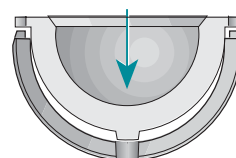
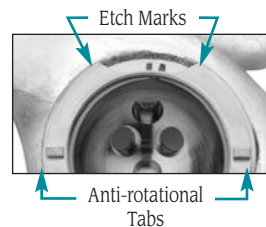
Select the appropriate length screw and insert it in the hole with the Screwdriver (C). Place additional screws as necessary.

Warning: Avoid screw placement through the shell into the anterior inferior quadrant of the acetabulum to prevent injury to the neurovascular structures.

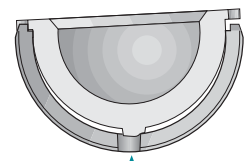


10 LINER POSITIONING

Insert Provisional Liner into prosthesis to check appropriate liner elevation. The anti-rotational slots on the trial liner should line up with the two anti-rotational tabs and black etch marks located on the rim of the shell. **Clear all soft tissue** from around the perimeter of the shell and assess visualization. To achieve complete congruency, dry inner shell thoroughly. Place the final poly liner with Liner Positioner, or by hand. Align with anti-rotational tabs. Ensure that both tabs are engaged with prosthesis liner slots.



Correct Vertical Alignment



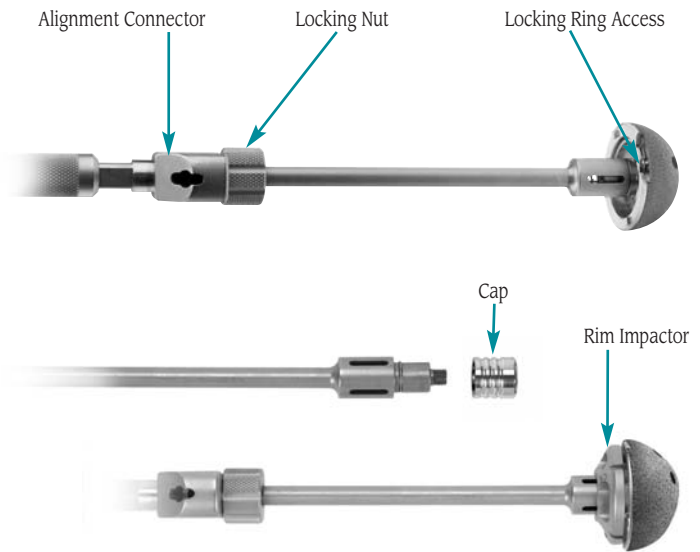
Shell and Polar Boss Misaligned

5 POSITIONER ASSEMBLY

Thread the implant onto the positioner securely. Position alignment connector as shown. Alignment connector should be in line with locking ring access. Impact alignment connector to engage onto the taper. Tighten Locking Nut. Impaction will be applied primarily to the dome of the implant.

Alternatively: The Rim Impactor can be utilized. Remove the cap from the Cup Positioner and replace with the Rim Impactor. The Rim Impactor size should correspond with the implant size selected. The implant should be threaded onto the positioner securely. Impaction will be applied primarily to the rim of the implant.

Warning: Use caution to avoid impacting the anti-rotational tabs on the rim of the implant.



11 LINER INSERTION

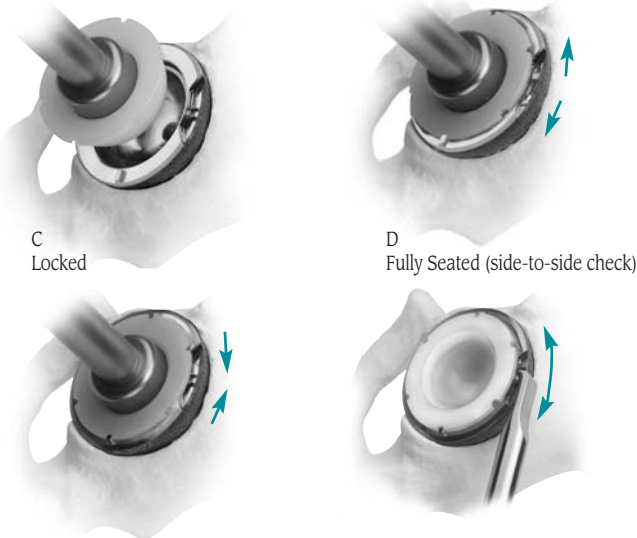
Push the liner into the shell. Impaction may be necessary to fully engage liner into shell. Watch for the locking tabs to open and then close together. There will be a 2mm to 3mm gap between the locking ring tabs. The prosthetic liner is fully seated when the locking ring tabs can be moved from side-to-side with a probe. The ring serves to lock the liner in place. It must float freely inside the shell to function properly.

A Before Insertion

B Insertion

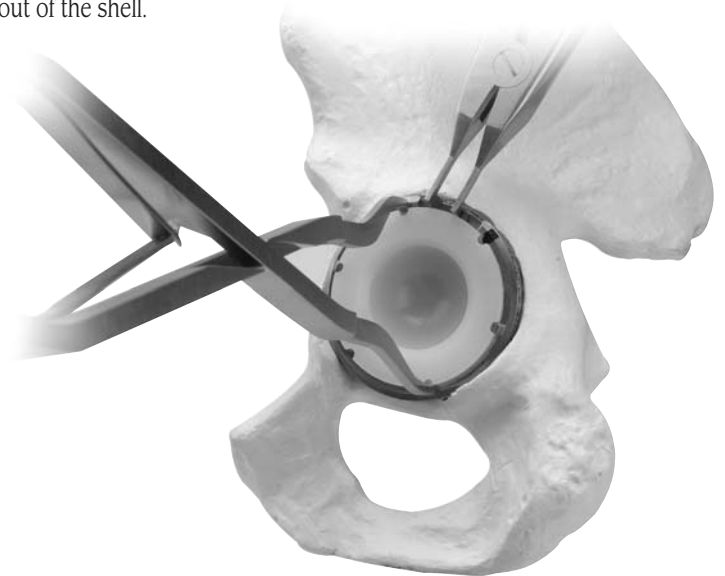
C Locked

D Fully Seated (side-to-side check)



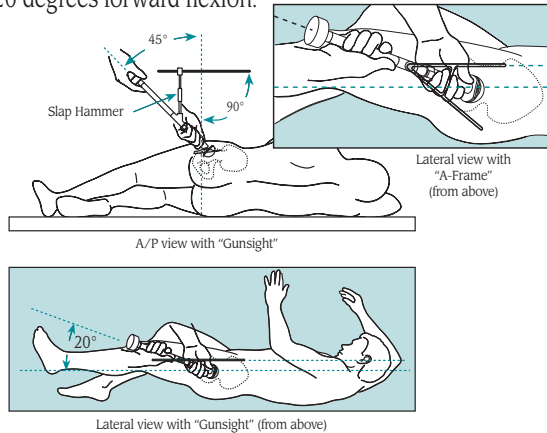
12 LOCKING RING REPLACEMENT (IF REQUIRED)

If upon inspection, during primary or revision surgery, it is determined that the locking ring is not functioning properly or has become damaged, it must be replaced. If seated, the liner is removed using the Disassembly Device to open the ring, while at the same time using the Liner Extractor to clamp and lift the liner out of the shell.



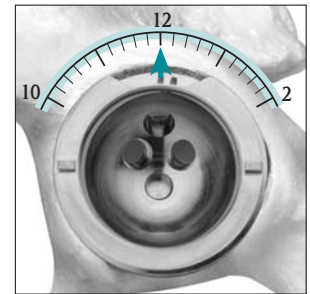
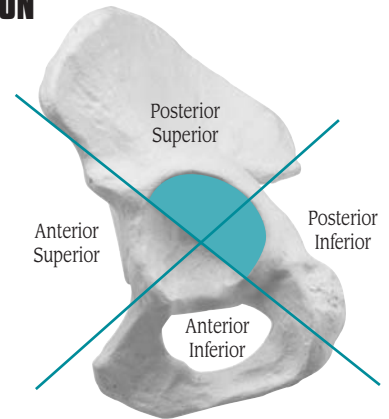
6 IMPLANT POSITIONING AND ALIGNMENT

Ensure the patient is in the correct position. With the final prosthesis connected to the Acetabular Cup Impactor/Positioner, insert shell into the prepared site. Keep the slap hammer portion of the positioner vertical, and "A-Frame" or "Gunsight" extension parallel with the patient's body, to achieve 45 degrees abduction and 20 degrees forward flexion.



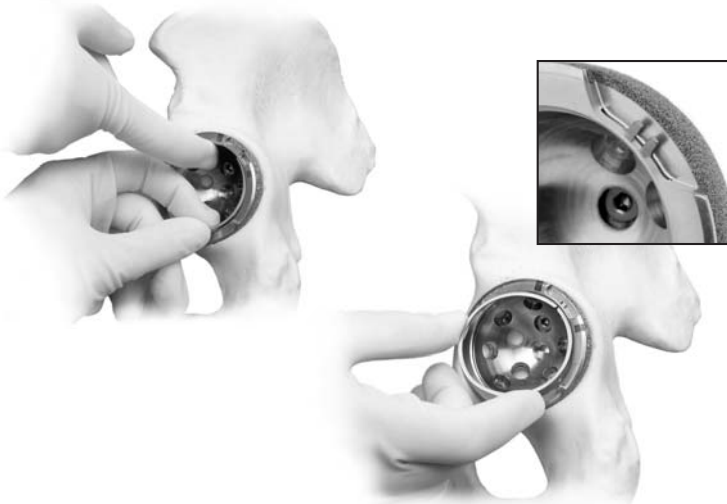
7 IMPLANT ORIENTATION

The potential for neurologic and vascular injury can be minimized if the posterior quadrants are used for transacetabular screw placement.* The cluster-holed shell should be positioned to allow screw placement in the posterior superior and/or posterior inferior quadrants of the acetabulum.



12 LOCKING RING REPLACEMENT (CONT'D)

If the ring does not float freely in the shell and is damaged, it must be removed. To remove the old ring, push the ring to the side of the shell and grab the exposed portion on the opposite side of the shell. A firm and steady grip is required. To insert a new ring, first insert the tabs of the ring into the locking ring window. Then, press the ring into place. When properly seated, the ring will first pop into place and then float freely in the shell. Liner assembly can now take place.



13 FINAL REDUCTION

Perform final reduction to assess range of motion, hip stability, and limb length. If "fine tuning" or a different liner style is needed, use the Disassembly Device to remove the liner.



* Wasielewski RC, Cooperstein LA, Kruger MP, Rubash HE. Acetabular anatomy and the transacetabular fixation of screws in total hip arthroplasty. *J Bone Joint Surg.* 1990;72-A,4,501-508.